

# COMMUNICATING NATURAL HAZARDS IN A SCIENCE MUSEUM

Claudia Lauro, Lucilla Galatà  
MUSE – Science Museum of Trento

MUSE



# THE MUSEUM



A scientific and cultural centre focused both on nature and the mountain environment, and on science and innovation, in the perspective of sustainability.



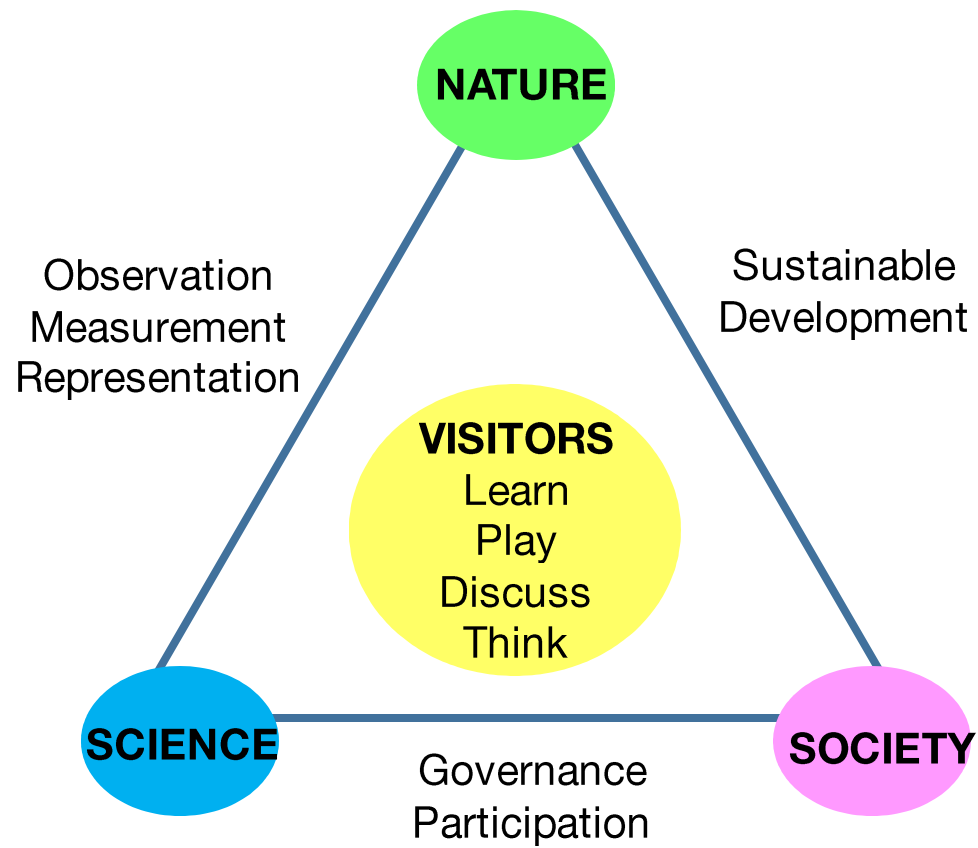
**Numbers:**

12,600 m<sup>2</sup> of space; 500,000 visitors/year; 200,000 students/year;  
50ML €/year the positive impact on city economy;  
240 FTE employees.

# Six floors, one unique open space

from the top of the mountains to the deep history of life





**1** NO  
POVERTY



**2** ZERO  
HUNGER



**3** GOOD HEALTH  
AND WELL-BEING



**4** QUALITY  
EDUCATION



**5** GENDER  
EQUALITY



**6** CLEAN WATER  
AND SANITATION



**7** AFFORDABLE AND  
CLEAN ENERGY



**8** DECENT WORK AND  
ECONOMIC GROWTH



**9** INDUSTRY, INNOVATION  
AND INFRASTRUCTURE



**10** REDUCED  
INEQUALITIES



**11** SUSTAINABLE CITIES  
AND COMMUNITIES



# THE GLOBAL GOALS

For Sustainable Development

**12** RESPONSIBLE  
CONSUMPTION  
AND PRODUCTION



**13** CLIMATE  
ACTION



**14** LIFE BELOW  
WATER



**15** LIFE  
ON LAND

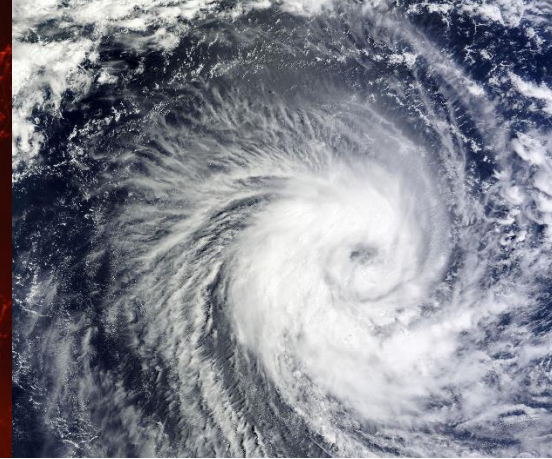


**16** PEACE AND JUSTICE  
STRONG INSTITUTIONS



**17** PARTNERSHIPS  
FOR THE GOALS

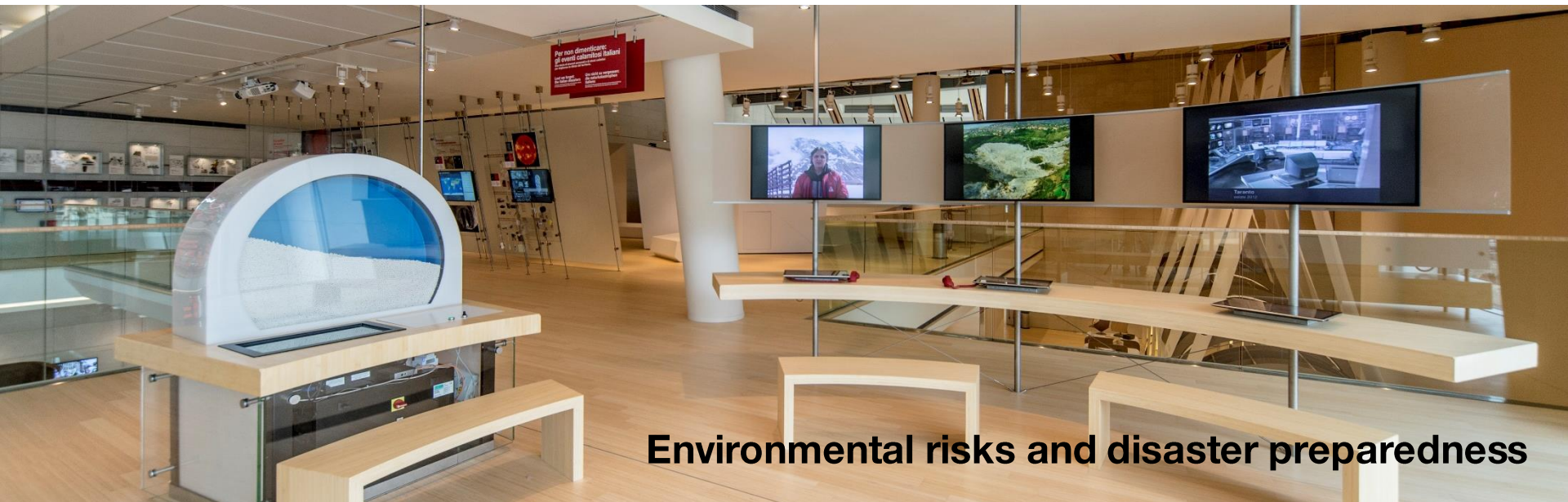




# COMMUNICATING NATURAL HAZARDS



# MUSEUM HALLS – PERMANENT EXHIBITIONS



**Environmental risks and disaster preparedness**



**Sustainability and Innovation**

# MUSEUM HALLS – TEMPORARY EXHIBITIONS



# CONFERENCES AND SEMINARS



Risk communication



Before the flood

# SCIENCE CAFÈS & DRINK 'N THINK



Drink 'n think



Science café

## EVENTS & FAIRS



International day for disaster reduction



European researcher's night

# CITIZEN SCIENCE

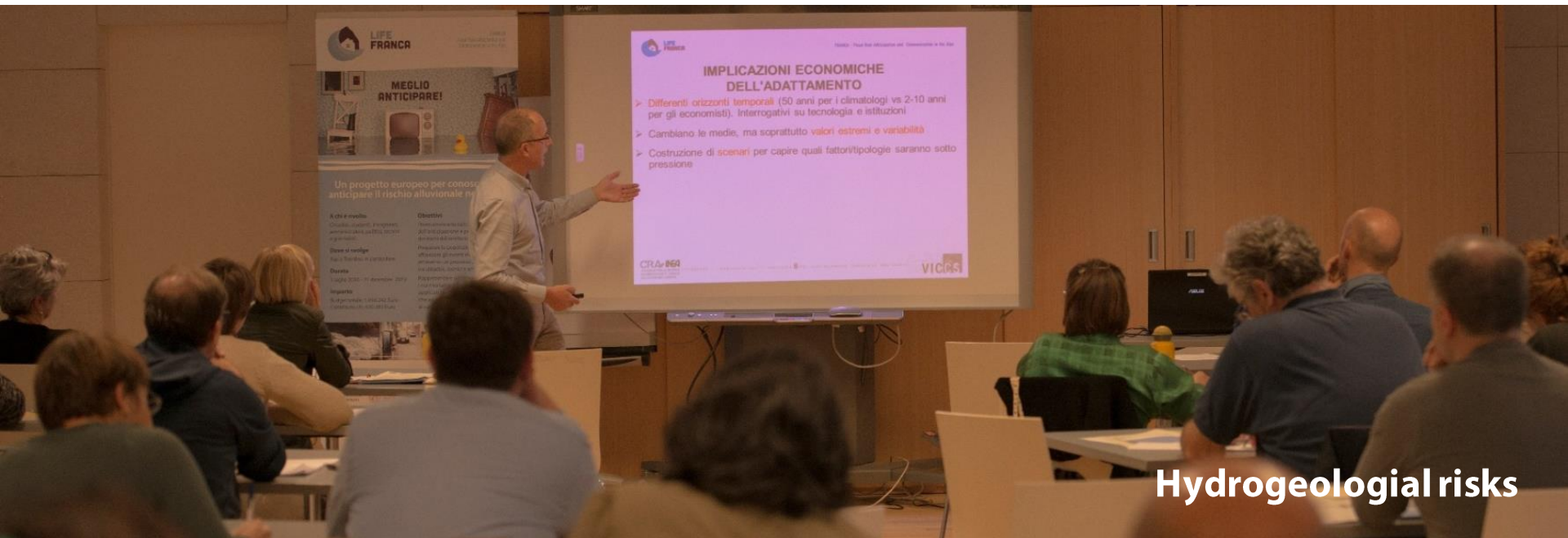


Urban Nature



Black carbon

# TEACHER'S TRAINING COURSES



Hydrogeological risks



Gorge near Ponte Alto

# EDUCATIONAL ACTIVITIES



Earthquakes



ArduRiver

# EUROPEAN PROJECTS



## LIFE FRANCA

Flood Risk **AN**ticipation and **C**ommunication in the **Alps**

# FURTHER ACTIVITIES



Visual identity



## SCIENCE CAFÈS

h. 6.00 pm – MUSE CAFÈ

- **Natural hazards and risk perception in mountain environment**  
7 November – Prof. Marco Borga, University of Padua
- **Trentino 2040: community prepared to future floods events**  
14 November – PhD Rocco Scolozzi, University of Trento
- **Futures Studies and natural risks prevention**  
21 November – Prof. Roberto Poli, University of Trento



## TEMPORARY EXHIBITION

November, December 2019 - MUSE

**Nature in Motion. Anticipating floods**

## LIFE FRANCA FINAL PUBLIC EVENT

6 December 2019 – MUSE

With the participation of **Mario Tozzi**, researcher at CNR and science communicator.



# THANK YOU



[claudia.lauro@muse.it](mailto:claudia.lauro@muse.it)  
[lucilla.galata@muse.it](mailto:lucilla.galata@muse.it)



[www.muse.it](http://www.muse.it)  
[www.lifefranca.eu](http://www.lifefranca.eu)



@lifefranca  
@musetrento

MUSE